

PELTECH LLC

HARDWARE SERVICES

PelTech offers hardware installs, upgrades, and replacements for most modern components at a flat fee of \$19.99 + hardware cost. Below is a list of common hardware we handle, but it's not exhaustive. For extras like case fans, cable management, or RGB setup, just let us know!



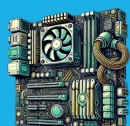
Storage: Most desktop computers can have their storage devices replaced or upgraded. You can choose between a Hard Disk Drive (HDD) or a Solid State Drive (SSD).



Memory (RAM): Most desktop computers can expand their RAM, boosting system speed and multitasking capabilities. Some laptops also support memory upgrades, but not all.



Power Supply Unit (PSU): The PSU powers all components of a computer. Most desktop PCs can have their power supply replaced or upgraded to support higher-performance hardware. However, laptops generally do not allow for PSU upgrades.



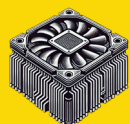
Motherboard: The motherboard is the main circuit board connecting all computer components. Desktop motherboards can often be replaced or upgraded to support newer hardware, like CPUs and RAM. However, laptops typically have fixed motherboards that cannot be upgraded.



Graphics Card (GPU): The GPU handles image rendering and visual performance. Most desktop PCs can have their graphics cards upgraded or replaced for better performance. In laptops, GPUs are usually integrated and cannot be upgraded.



Processor (CPU): The CPU is the core of a computer, handling all primary calculations. Most desktop PCs allow CPU upgrades, provided the new processor is compatible with the motherboard. In laptops, CPUs are usually soldered and cannot be replaced or upgraded.



CPU Cooler: The CPU cooler dissipates processor heat. Desktop PCs often allow cooler upgrades, including water cooling for better performance. Laptop coolers are typically integrated and non-replaceable.